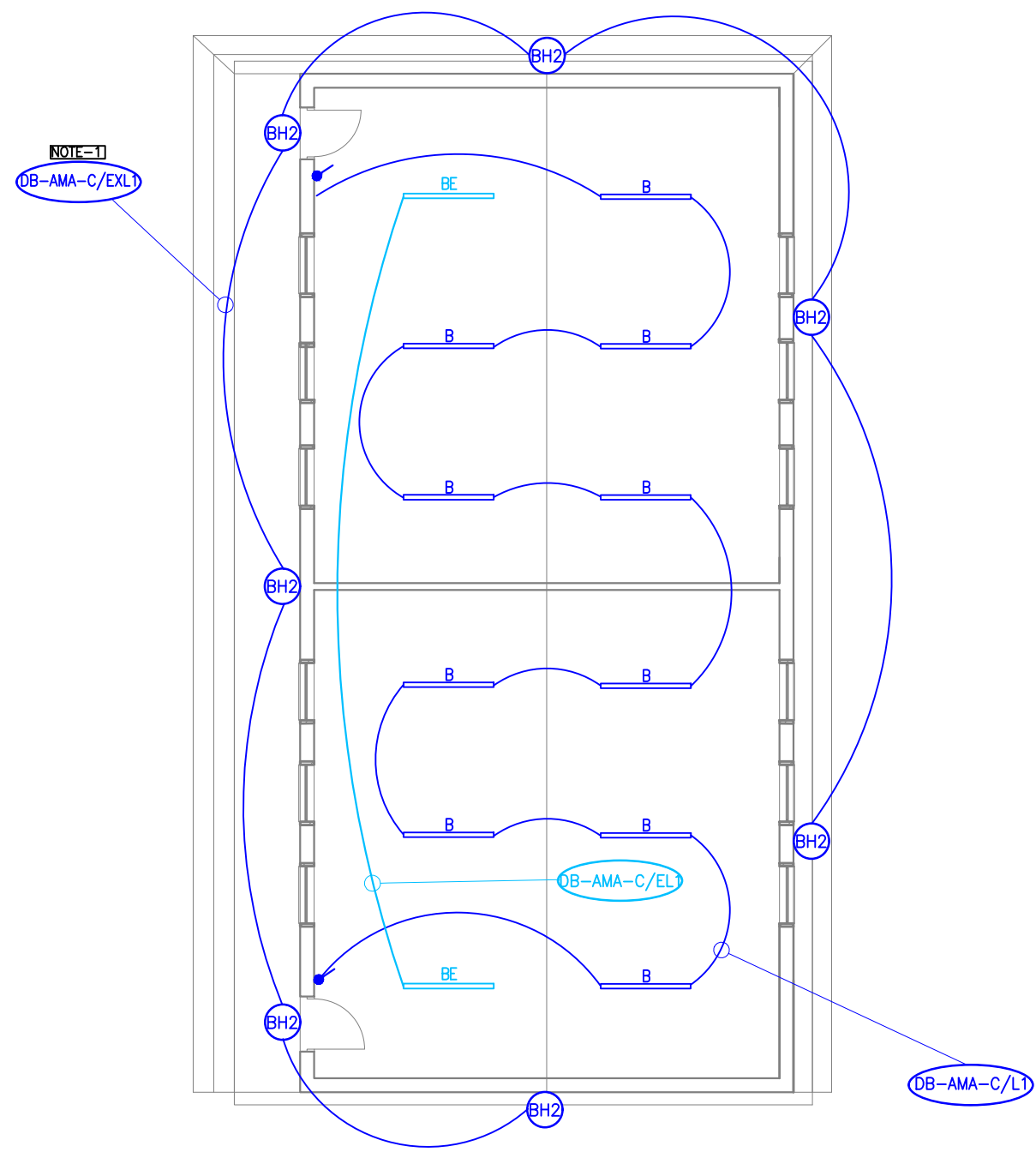
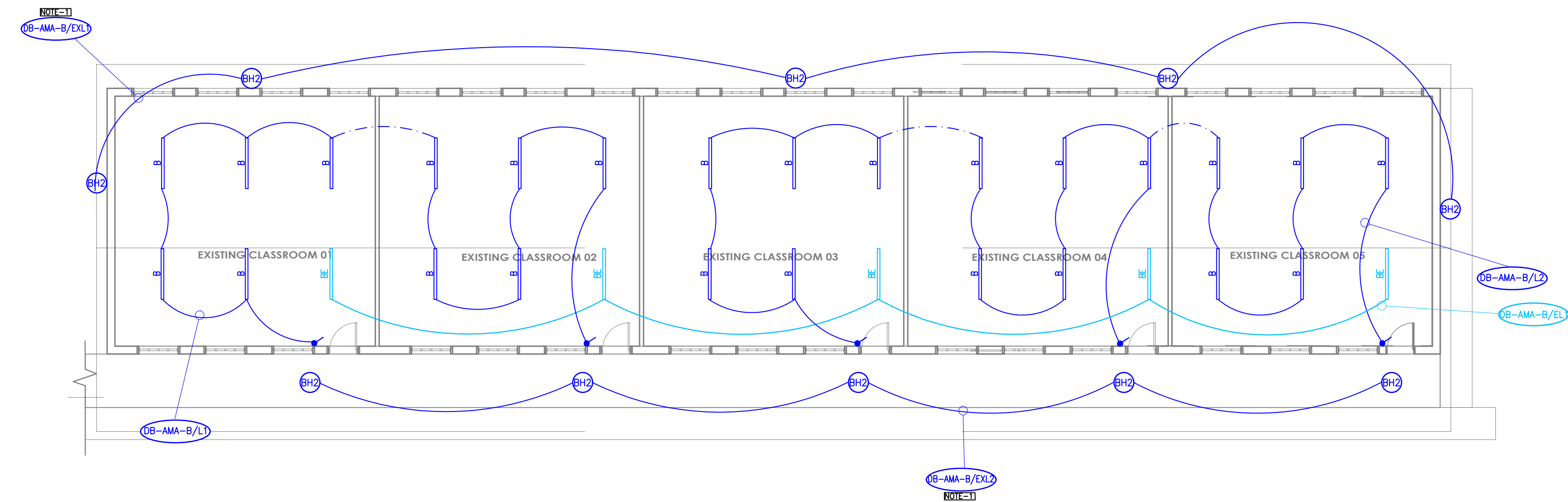


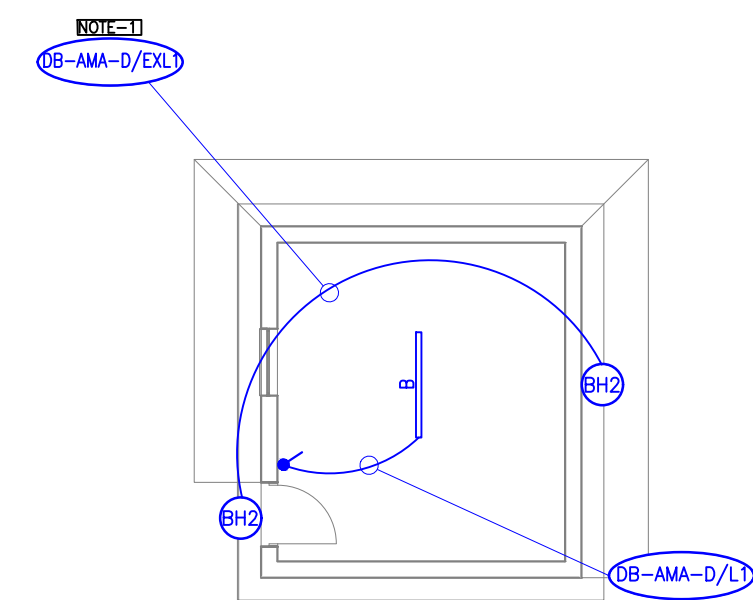
BLOCK A CLASSROOM LIGHTING LAYOUT
SCALE 1:100



BLOCK C CLASSROOM LIGHTING LAYOUT
SCALE 1:100



BLOCK B CLASSROOM LIGHTING LAYOUT
SCALE 1:100



BLOCK D
SCALE 1:100

BLOCK D CLASSROOM LIGHTING LAYOUT
SCALE 1:100

LIGHTING LEGEND

B	EN-ANT 1240, 4400lm, LED, COOL WHITE - SUPPLIED BY AURORA OR EQUAL & APPROVED
BE	AS "E" BUT WITH 20% MAINTAINED BATTERY PACK. A SEPARATE NON-SWITCHED LIVE FEED FROM OUT-GOING SIDE OF MCB TO EMERGENCY FITTING IS TO BE INSTALLED. 24hrs
BH	EN-BH15, 1150lm, LED, COOL WHITE - SUPPLIED BY AURORA OR EQUAL & APPROVED
BS	EN-BH20, 1650lm, COOL WHITE - AURORA LIGHTING OR EQUAL AND APPROVED
SW	LIGHT SWITCH

LIGHTING NOTES:

NOTE 1 :CONTROL OF LIGHTING:

EXTERNAL LIGHTING CONTROL TO BE ON A DAY/NIGHT SWITCH.

NOTE 2 :24 HOUR LIGHTING:

24 HOUR LIGHTING NOT TO BE SWITCHED THROUGH CONTRACTOR. FITTING MARKED 'E' TO HAVE 20% MAINTAINED BATTERY PACK FITTED ONLY FOR MINIMUM OF 1hr.

NOTE 3 :STEEL TRUNKING:

STEEL TRUNKING OF SUITABLE SIZE COMPLETE WITH PVC COVER AND ACCESSORIES FOR LIGHTING AND POWER CIRCUITS. WIRING IN TRUNKING NOT TO EXCEED 40% CAPACITY. 5 AMP SOCKETS TO BE MOUNTED IN TRUNKING OR ON TRUNKING FOR PLUGGING IN OF LUMINAIRES.

B	05.07.2023	T.T	CHANGED EMIS NUMBER	LL	LL
A	03.07.2023	T.T	ISSUED FOR INFORMATION	LL	LL
REV	DATE	BY	DESCRIPTION	CHK	APD

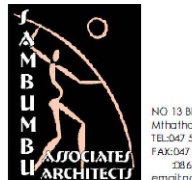
DRAWING STATUS

FOR INFORMATION

FUNDER:	 education Department of Education PROVINCE OF KWAZULU-NATAL
---------	--

IMPLEMENTING AGENT:	 DBSA Development Bank of Southern Africa
---------------------	--

PRINCIPAL AGENT:	 MARISWE No.7 Bush Smiles Close Victoria Country Club Estate 170 Peter Brown Drive Montrose/Pietermaritzburg 3201 Tel: 0333 347 7900 cellmaritzburg@mariswe.com
------------------	--

ARCHITECT:	 KUSUMA ARCHITECTS 100 13 Breda Road Durban 4001 Tel: 031 251 4142 Fax: 031 251 4142 Email: info@kusuma.co.za
------------	--

ENGINEER:	 KARO SOLUTIONS 6, Scherwitz Road Beria East London Tel: +27 43 722 3353 Fax: +27 06 554 6496 info@karosolutions.co.za
-----------	---

PROJECT:	AMABUYE SECONDARY SCHOOL, DUBE TRIBAL AUTHORITY, ESIKHAWINI, 3887, KWAZULU NATAL. EMIS No: 500101306
----------	--

TITLE:	BLOCK A, B, C & D LIGHTING LAYOUT
--------	--------------------------------------

SCALE @ A1:	1:100	CHECKED:	LL	APPROVED:	LL
CAD FILE:	KS130-L02	DESIGN DRAWN:	T.T-T.T	DATE:	03.07.2023
PROJECT No:	KS130	DRAWING No:	KS130-L02	REV:	B

© COPYRIGHT RESERVED
The content of this document is privileged and confidential and may not be disclosed or reproduced without the express authorisation of the author, being "KARO SOLUTIONS".